




4.1.1: The Institution has adequate infrastructure and other facilities for a. teaching – learning, viz., classrooms, laboratories, computing equipment etc
 b. ICT – enabled facilities such as smart class, LMS etc. Facilities for Cultural and sports activities, yoga centre, games (indoor and outdoor), Gymnasium, auditorium etc


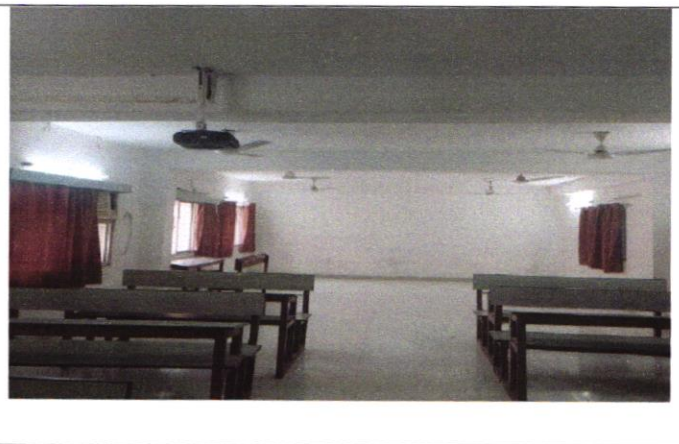

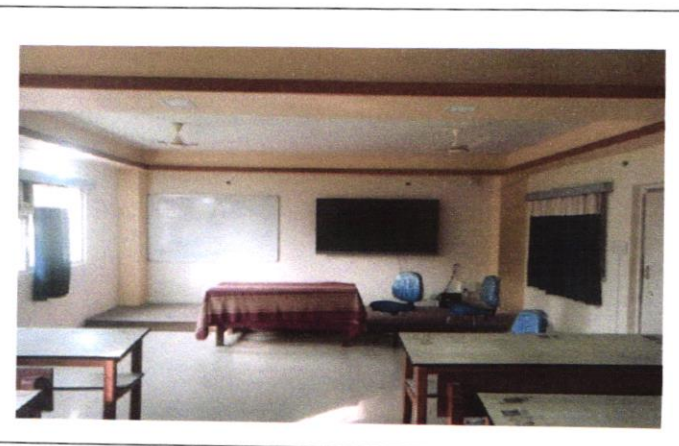
TEACHING-LEARNING FACILITIES (CLASSROOMS, SEMINAR HALLS AND CONFERENCE ROOM)

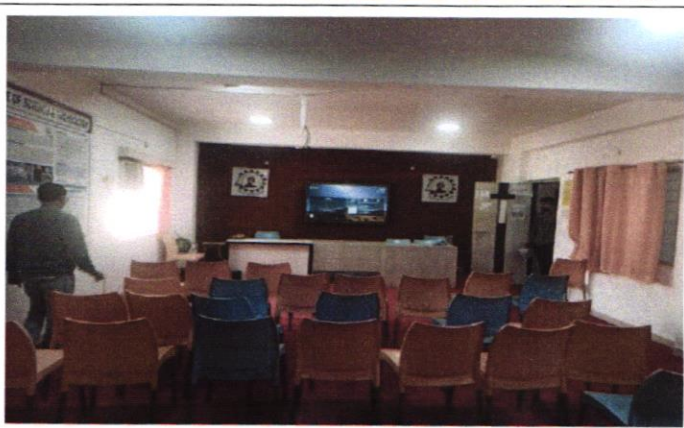
Room No.	Type of ICT Facility	Photograph
<p>A203 (CLASSROOM)</p>	<p>LCD Projector, AC & CCTV Camera</p>	
<p>A205 (CLASSROOM)</p>	<p>CCTV Camera, & AC</p>	
<p>A210 (CLASSROOM)</p>	<p>LCD Projector, CCTV Camera & AC</p> <p><i>S. Ghosh</i> Principal</p>	

Swami Vivekananda Institute of
 Science & Technology
 Dakshin Gobindapur
 P.S.- Sonarpur, Kolkata-145

<p>A212 (CLASSROOM)</p>	<p>LCD Projector, CCTV Camera & AC</p>	
<p>A301 (SMART CLASSROOM)</p>	<p>Smarty board, CCTV Camera, & AC</p>	
<p>A303 (CLASSROOM)</p>	<p>CCTV Camera, & AC</p>	
<p>A305 (CLASSROOM)</p>	<p>CCTV Camera, & AC</p> <p><i>Sybil</i></p>	

Principal
Swami Vivekananda Institute of
Science & Technology
Dakshin Gobindapur
P.S.- Sonarpur, Kolkata-145


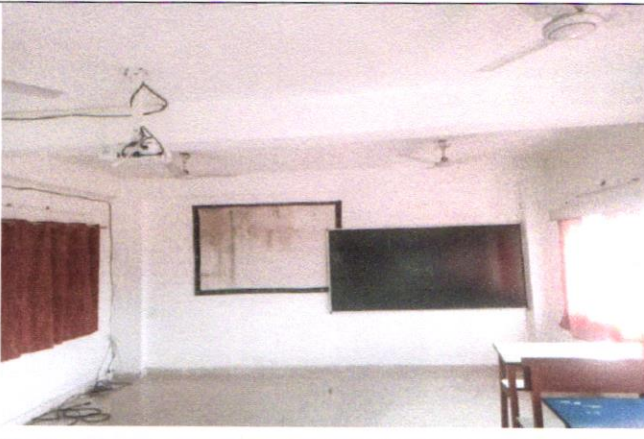
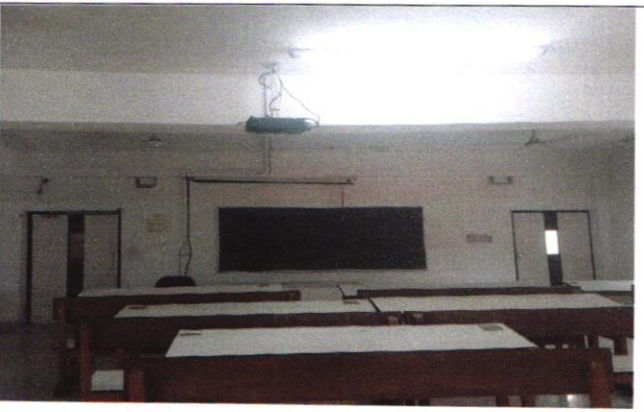

<p>A311 (CLASSROOM)</p>	<p>LCD Projector, AC & CCTV Camera</p>	
<p>A313 (CLASSROOM)</p>	<p>LCD Projector, AC & CCTV Camera</p>	
<p>A317 (SMART CLASSROOM)</p>	<p>Smarty board, CCTV Camera & AC</p>	
<p>A318 (SMART CLASSROOM)</p>	<p>Smarty board, CCTV Camera, & AC</p> <p><i>Sybil</i> Principal</p>	

<p>A403 (CLASSROOM)</p>	<p>LCD Projector & AC</p>	
<p>A405 (SMART CLASSROOM)</p>	<p>Internet, Smartboard, Sound System, & AC</p>	
<p>A407 (CLASSROOM)</p>	<p>LCD Projector, & AC</p>	
<p>A409 (CLASSROOM)</p>	<p>LCD Projector, CCTV Camera & AC</p> <p><i>Sghh</i></p>	




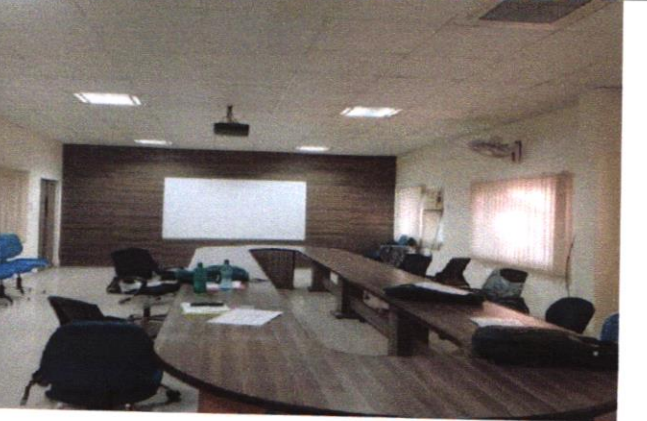
Principal
Swami Vivekananda Institute of
Science & Technology
Dakshin Gobindapur
P.S.- Sonarpur, Kolkata-145

<p>A410 (SMART CLASSROOM)</p>	<p>Smartboard, CCTV Camera & AC</p>	
<p>A411 (SMART CLASSROOM)</p>	<p>Smartboard, CCTV Camera & AC</p>	
<p>A412 (CLASSROOM)</p>	<p>LCD Projector, CCTV Camera & AC</p>	
<p>A413 (SMART CLASSROOM)</p>	<p>Smartboard, CCTV Camera & AC</p>	


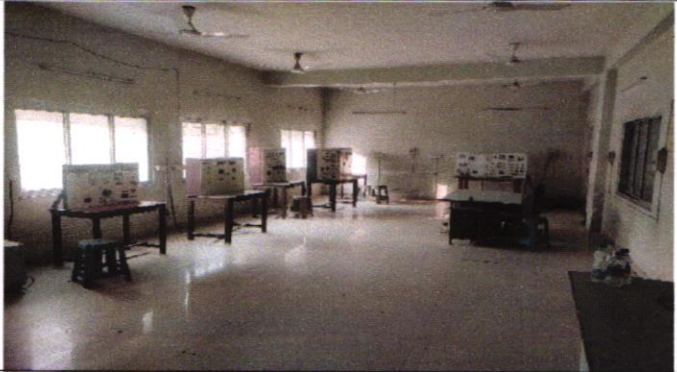

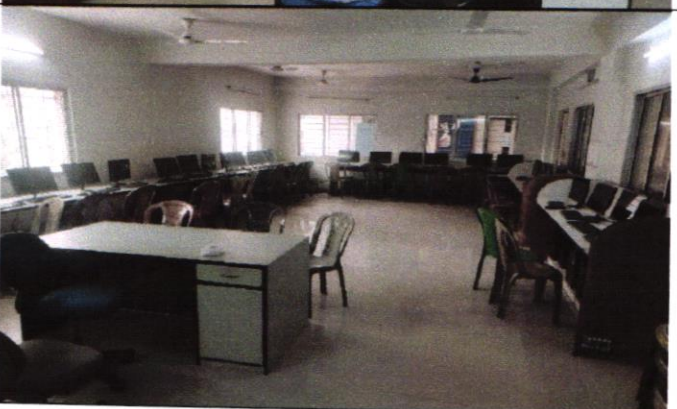
Sg
Principal
Swami Vivekananda Institute of
Science & Technology
Dakshin Gobindapur
P.S.- Sonarpur, Kolkata-145

<p>A419 (CLASSROOM)</p>	<p>CCTV Camera & AC</p>	
<p>A420 (CLASSROOM)</p>	<p>LCD Projector, CCTV Camera & AC</p>	
<p>C101 (CLASSROOM)</p>	<p>LCD Projector, CCTV Camera & AC</p>	
<p>C103 (CLASSROOM)</p>	<p>CCTV Camera & AC</p> <p><i>Syhad</i></p>	

Principal
Swami Vivekananda Institute of
Science & Technology
Dakshin Gobindapur
P.S.- Sonarpur, Kolkata-145

<p>C104 (CLASSROOM)</p>	<p>CCTV Camera & AC</p>	
<p>A324 SeminarHall – 1</p>	<p>LCD Projector, Microphone, Amplifier - Mixer, Speaker, & AC</p>	
<p>SeminarHall – 2</p>	<p>LCD Projector, Microphone, Amplifier - Mixer, Speaker, & AC</p>	
<p>A115 ConferenceRoom</p>	<p>LCD Projector, Smart TV & AC</p> <p><i>Syhad</i></p> <p>Principal</p>	

**LABORATORY FACILITIES OF THE DEPARTMENT OF ELECTRICAL &
ELECTRONICS ENGINEERING**

Room No.	Photograph
<p align="center">A110 Electrical Machine Lab (I & II)</p>	
<p align="center">A117 Power System Lab</p>	
<p align="center">A119 Basic Electrical Lab</p>	
<p align="center">A204 Circuit Theory Lab</p>	

Sghul

Principal
Swami Vivekananda Institute of
Science & Technology
Dakshin Gobindapur
P.S.- Sonarpur, Kolkata-145

**A302
Control System Lab**



**A304
Electrical & Electronics
Measurement Lab**



**A307
Power Electronics Lab**



**A324
EEE project lab**







**A324
EEE PLC LAB**



Sghh

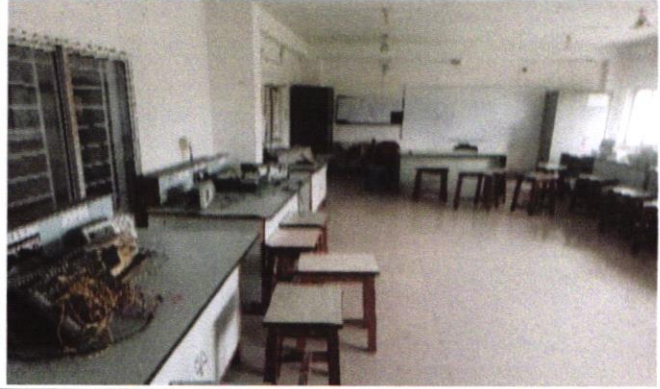
Principal
Swami Vivekananda Institute of
Science & Technology
Dakshin Gobindapur
P.S.- Sonarpur, Kolkata-145

**LABORATORY FACILITIES OF DEPARTMENT OF ELECTRONICS &
COMMUNICATION ENGINEERING**

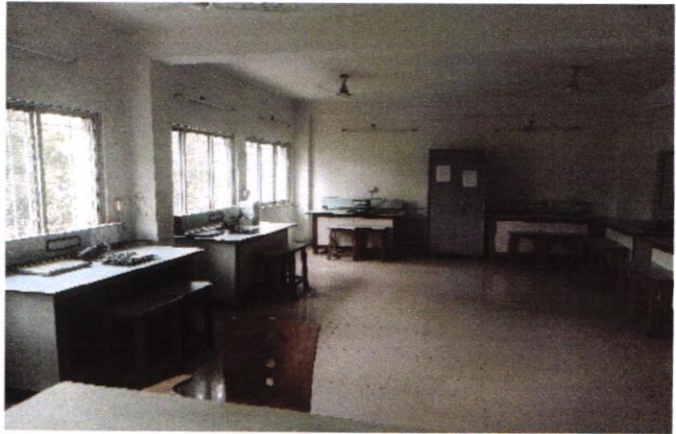
Room No.	Photograph
<p align="center">A201</p> <p align="center">Electromagnetic Wave and Transmission Line Lab</p>	
<p align="center">A202</p> <p align="center">Digital Electronics Lab</p>	
<p align="center">A207</p> <p align="center">Analog Electronics Lab./Electronic Device Lab</p>	
<p align="center">A310</p> <p align="center">DSP and Control System Lab</p> <p align="right"><i>Sghul</i></p>	

Principal
Swami Vivekananda Institute of
Science & Technology
Dakshin Gobindapur
P.S.- Sonarpur, Kolkata-145

A325
Communication Lab



A326
**Microprocessor &
Microcontroller Lab**



A404
Basis Electronics Lab





A418
**ECE Project and Computer
Network Lab**



Sybil

Principal
Swami Vivekananda Institute of
Science & Technology
Dakshin Gobindapur
P.S.- Sonarpur, Kolkata-145

**LABORATORY FACILITIES OF THE DEPARTMENT OF MECHANICAL
ENGINEERING**

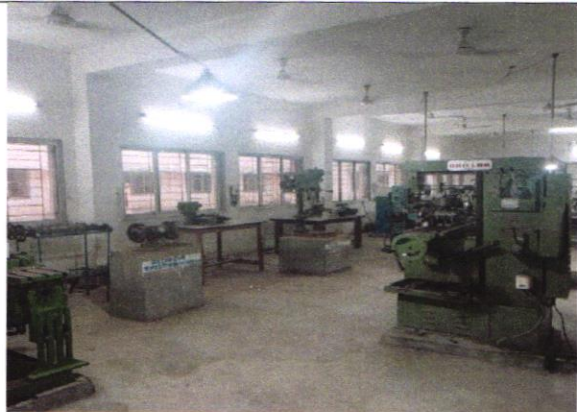
<p>A121 Workshop/ Manufacturing practices – 1</p>	
<p>A122 Workshop/ Manufacturing practices – 2</p>	
<p>A401 Engineering Graphics & Design</p>	
<p>B103 Practice of Manufacturing Process Laboratory – I</p> <p><i>Sgh</i></p>	

Principal
Swami Vivekananda Institute of
Science & Technology
Dakshin Gobindapur
P.S.- Sonarpur, Kolkata-145

B105
Practice of Manufacturing
Process Laboratory – II



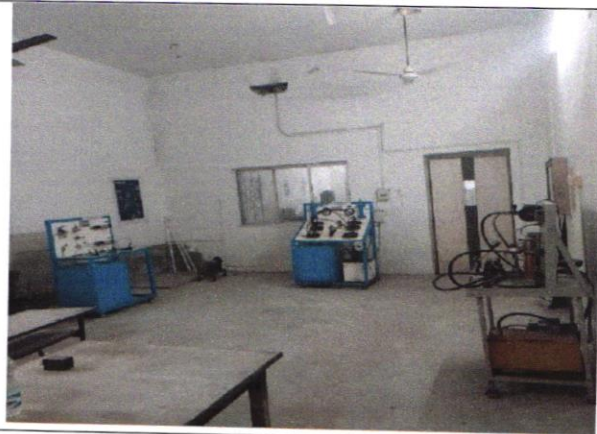
A121
Practice of Manufacturing Process
and Systems Lab 1



A122
Practice of Manufacturing Process
and Systems Lab 2



A124
Practice of Manufacturing Process
and Systems Lab 3



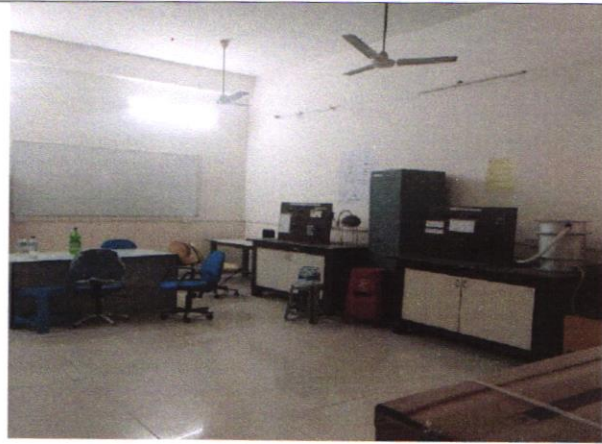
Syhh

Principal
Swami Vivekananda Institute of
Science & Technology
Dakshin Gobindapur
P.S.- Sonarpur, Kolkata-145

**A417
Machine Drawing Lab**



**A103
Mechanical Engineering
Laboratory – 1 (Thermal)**



**A104
Mechanical Engineering
Laboratory – 1 (Thermal)**



**A309
Metrology and Instrumentation Lab**

Principal
Swami Vivekananda Institute of
Science & Technology
Dakshin Gobindapur
P.S.- Sonarpur, Kolkata-145



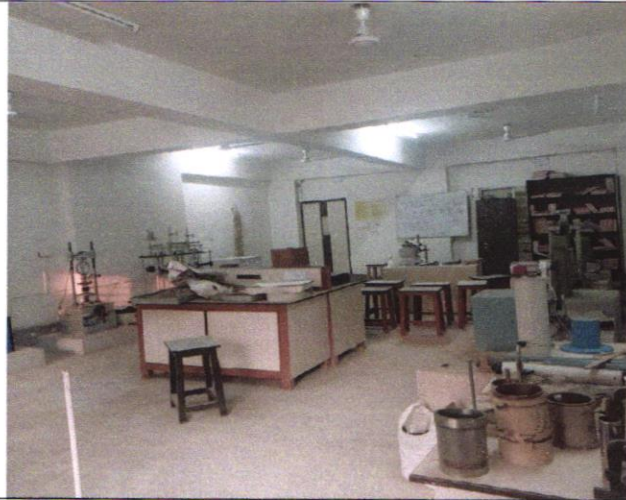
<p align="center">B102 Mechanical Engineering Lab II (Design)</p>	
<p align="center">A105 Mechanical Engineering Laboratory III (Manufacturing)</p>	
<p align="center">B203 Refrigeration and Air-conditioning Lab (Additional)</p>	

Sghub

Principal
Swami Vivekananda Institute of
Science & Technology
Dakshin Gobindapur
P.S.- Sonarpur, Kolkata-145

**LABORATORY FACILITIES OF THE DEPARTMENT OF CIVIL
ENGINEERING**

**C108
Soil Mechanics Lab**



**C108
Solid Mechanics Lab**



**C102
Transportation Lab**



**C102
Engineering Geology Lab
&
Survey And Geomatics Lab**



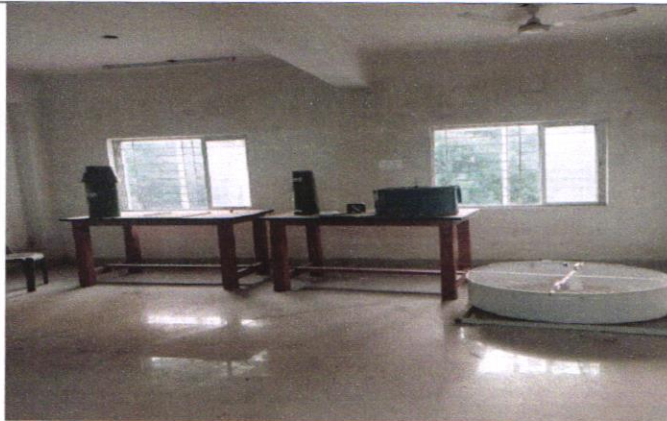
Sg

Principal
Swami Vivekananda Institute of
Science & Technology
Dakshin Gobindapur
P.S.- Sonarpur, Kolkata - 45

C105
Concrete Technology Lab



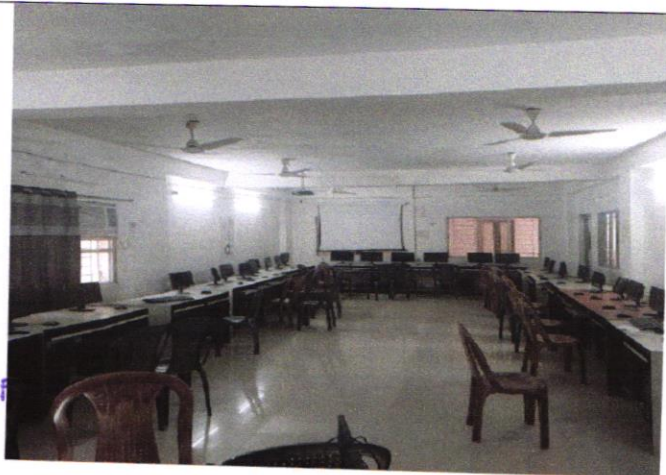
C206
Water Resources Engineering lab




C207
Drawing Lab






A417
**Computer-aided Civil Engineering
Drawing**







Principal
Swami Vivekananda Institute of
Science & Technology
Dakshin Gobindapur
P.S.- Sonarpur, Kolkata-145

**LABORATORY FACILITIES OF THE DEPARTMENT OF COMPUTER
SCIENCE & ENGINEERING**

Room No.	Photograph
CSE Lab 1 A215	
CSE project lab A216	
CSE lab 2 A217	
CSE Lab 3 A219	


Principal
Swami Vivekananda Institute of
Science & Technology
Dakshin Gobindapur
P.S.- Sonarpur, Kolkata-145

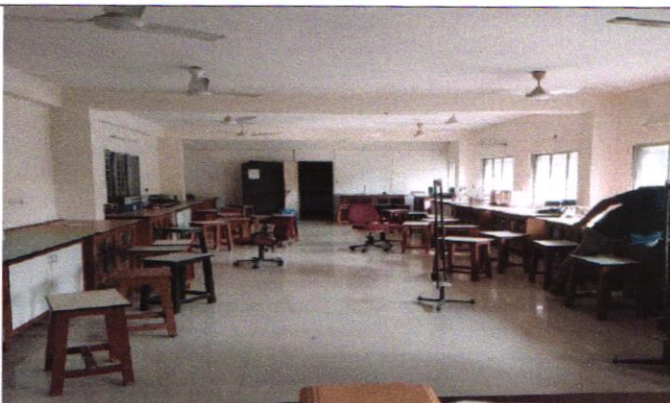
<p>CSE lab 4 A220</p>	 A photograph of a computer lab with several rows of desks, each equipped with a computer monitor and keyboard. The room is well-lit with overhead lights.
<p>CSE lab 5 A-222</p>	 A photograph of a computer lab with long desks and chairs arranged in rows. The room has large windows with red curtains and ceiling fans.
<p>Server Room A218</p>	 A photograph of a server room with several computer workstations, including monitors and keyboards, and a server rack. The room has a window and some equipment on shelves.

Signature

Principal
Swami Vivekananda Institute of
Science & Technology
Dakshin Gobindapur
P.S.- Sonarpur, Kolkata-145

**LABORATORY FACILITIES OF THE DEPARTMENT OF BASIC SCIENCE &
HUMANITIES**

**Physics Lab
A 211**



**Chemistry Lab
A109**



YOGA ROOM

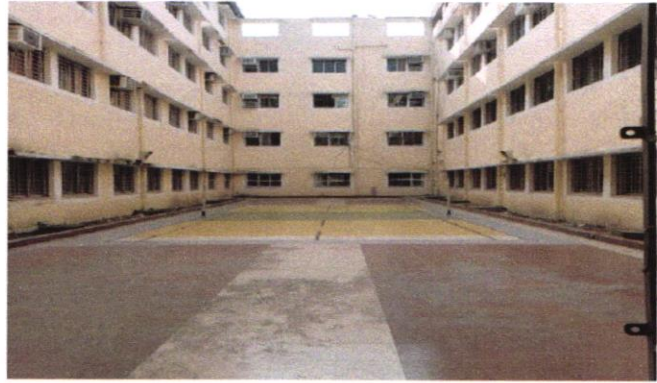
**Yoga Room
A406**



Principal
Swami Vivekananda Institute of
Science & Technology
Dakshin Gobindapur
P.S.- Sonarpur, Kolkata-145

INSTITUTION SPORTS COMPLEX AND CANTEEN

Badminton court



Basketball Court




Volley Ball Ground



Canteen (Inside View)




Principal
Swami Vivekananda Institute of
Science & Technology
Dakshin Gobindapur
P.S.- Sonarpur, Kolkata-145

INSTITUTION READING ROOM, COMMON ROOM AND MUSIC CLUB

**Reading Room
A224**



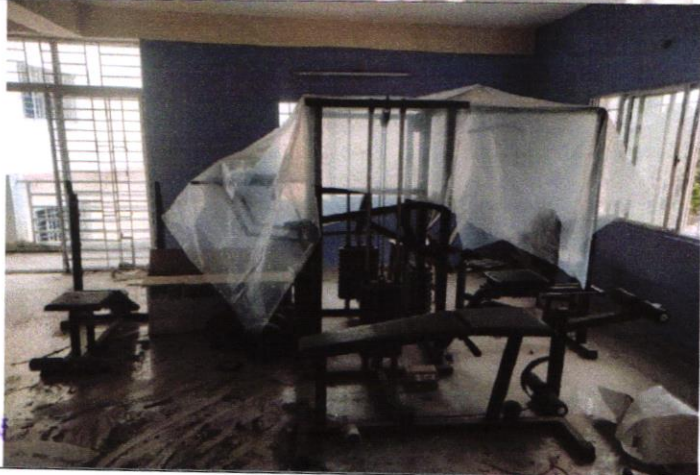
Common Room



Music Club



Gymnasium



Sybil

Principal
Swami Vivekananda Institute of
Science & Technology
Dakshin Gobindapur
P.S.- Sonarpur, Kolkata-145